



A Covenant Community

Waverly Park Press

June 1, 2004

Look For The
New WP Directory
In Mailboxes
Today!

Inside this issue:

New General Assembly Maps	4
How's Your 2004 Assessment?	5
Priceless Gifts For Free	6
Need A Baby-sitter?	6
Recent Neighborhood Sales ...	6
Pot Hole Patrol	6
What Were They Thinking?	6
Board Meeting Notes	3
Board of Directors	2
Current and Upcoming Events	2
Architectural Committee Update	4
Sunshine Committee	5

WP Pool Is Open!



Outdoor Watering Restrictions Mandatory

The Georgia Board of Natural Resources (DNR) approved a rule on May 26, 2004, that sets a permanent statewide outdoor watering schedule.

The voluntary watering schedules, set June 1, 2003, are now mandatory and are:

- Odd-numbered addresses water on Tuesday, Thursday and Sundays
- Even-numbered or un-numbered addresses water on Monday, Wednesday and Saturdays

Restrictions may be increased during declared droughts and would include time restrictions on your wa-

tering days, fewer watering days and finally no outdoor watering.

Apparently, "irrigation of personal food gardens" is exempt from restrictions in both non-drought and drought conditions.

There is a wide range of exemptions for commercial water users.

Local water authorities may impose the same or more restrictive schedules and are responsible for enforcement and setting penalties.

Reports published last week said Cherokee County Water Authority began enforcing the mandatory restrictions on

Friday, May 28. However, as of this morning, the Authority's web site (www.ccwsa.com) as still indicating that the restrictions were only voluntary.

The complete rule and other information are available at

www.conservewatergeorgia.net



Redistricting Changes Affect Waverly Park

The federal court-mandated redistricting for the Georgia General Assembly approved in March means changes for Waverly Park (WP).

WP is now in Senate District 27 and House District 22. See *New General Assembly Maps* on page 4. The maps show the House district boundaries and portions of the Senate district boundaries

as they pass near WP.

WP is just barely in each district. Boundaries for both districts include Billings Road to the east, Billings Farm Lane to the south and Ranchwood Trail to the south and west.

WP remains in Wildcat precinct and votes at Holly Springs Elementary School

on Hickory Road.

June 21 is the registration deadline for voting in the July 20 primary and the August 20 runoff, if needed.



About *Waverly Park Press*...

- Published at www.waverlyparke.com on the first of each month by the Waverly Park Homeowners Assoc., Inc. (WPHA), P. O. Box 26, Lebanon, GA 30146, as a service to its members and the residents of Waverly Park.
- Delivered on request to Waverly Park homes without Internet access. Leave a delivery message with name and address at the phone number below.
- Articles and information of interest to Waverly Park residents are welcome. Anonymous articles are not accepted. E-mail input is preferred. Please include your name, address and phone number. Deadline is the 28th of the month.
- Opinions expressed are those of the writers and may not reflect the opinion of WPHA or its directors and officers.
- Editor: Hamp Reid 770-720-4384 E-mail: wppress@mindspring.com

WPHA Board of Directors

President	Stephen Horne	770-345-4090	gsh777@alltel.net
Vice President	Kari Peace	770-720-2652	kdp1989@hotmail.com
Secretary	Carol Polly	678-493-3827	carolpolly@alltel.net
Treasurer	Carol Knapp	770-345-0823	caknapp@adelphia.net



Current and Upcoming Events

Time/Date	Event	Location	Contact
May 1 – September 30	Annual Outdoor Burning Ban	Metro-Atlanta counties	Fire Marshal: 770-720-6320
May 19	WP Pool Opened	620 Ashley Trail	Steve Dillon: 770-720-3990
Year-round beginning May 28, 2004	Mandatory Outdoor Watering Restrictions: Odd number addresses water on Tue, Thu, Sun; Even numbers on Mon, Wed, Sat	Statewide with enforcement by local authority	Cherokee County Water Authority
January 2 – June 1	New Homeowners apply for home- stead exemption.	100 North Street, Canton or South Annex, Woodstock	County Tax Assessor 770-479-0433
June 1 – November 30	Atlantic Hurricane Season		www.nhc.noaa.gov/
June 21	Last Day to Register for July 20 Vote and August 10 Runoff	Various locations, ways to register.	Voter Registration 770-479-0407
June 24	Last Day to Appeal 2004 Property Assessment	100 North Street Canton	Cherokee County Assessors 678-493-6120
July 20 7:00 am to 7:00 pm	VOTE: General Primary/Non- partisan Election/Special Election	WP Votes at Holly Springs Elementary School	
August 9, 2004	First Day of School		

Board Meetings Notes

—By Carol Polly

April 19, 2004

Newly elected 2004-2005 officers present: Stephen Horne, President; Kari Peace, Vice President; Carol Polly, Secretary; Carol Knapp, Treasurer

Meeting was called to order by Stephen Horne at 7:00 p.m.

Maintenance of Pool Grounds....It was suggested that we consider hiring an outside maintenance company to maintain the pool grounds. It was noted that a maintenance company would cost more than if we hired Josh Chernak, the son of a Waverly Park resident. Steve suggested if we use an individual that we write a contract stating what his duties would be and the amount of salary we would pay him. We would also have his parents sign the contract stating that they would be responsible for his work and safety. Carol K. motioned that we offer the contract to Josh Chernak. The motion was seconded and passed.

Pool cleaning and treatment for discoloration...Carol K. reported that the pool maintenance company, North Metro Pool & Spa, suggested the pool be treated for discoloration. The charge would be \$700.00. After further discussion, Steve made a motion to have the work done if after he talked with Steve Dillion, it was deemed necessary. Carol P. seconded motion and it passed.

Electrical box at pool. Steve volunteered to check out the box and see if further work would be needed on it.

Landscape sign area. Carol K. reported that there is approximately \$250.00 budgeted for landscaping Waverly Parke sign area. Steve and his family have volunteered to do the landscaping.

Waverly Park Directory...Discussed the possibility of getting the Waverly Park Directory out by June 1st this year. Steve to talk with Waverly Park Press regarding this.

Next meeting is set for May 16, 2004



May 16, 2004

2004-2005 Officers present: Stephen Horne, President; Kari Peace, Vice-President; Carol Polly, Secretary; Carol Knapp, Treasurer

Meeting was called to order by Stephen Horne at 7:00 p.m.

Minutes from previous meeting were read and approved.

OLD BUSINESS:

Maintenance of Pool Grounds: The contract between WPHA, Josh Chernak and Josh's parents has been signed and finalized. Josh will be responsible for the maintenance of the pool grounds under his parent's supervision. Mr. and Mrs. Chernak also agreed that they would take full responsibility for Josh's work and safety.

Maintenance of Pool Restrooms and Pool Area inside of Fence: Joan Dillion has signed a contract with WPHA to assume responsibility for cleaning Pool restrooms and area inside of fence.

Pool Cleaning and Treatment for Discoloration:

The board voted for the pool to be treated for discoloration at the end of the 2004 Pool Season.

Electrical Box located at Pool: Stephen reports that he checked out the electrical box, made only a couple of minor adjustments and it should pose no problems for now.

Landscape sign area: Stephen reported that he spend \$100.00 plants and planting material for the sign area. This project has been completed for this season.

Waverly Park Directory: Waverly Park Press reports that the 2004 Directory will be completed by June 1st.

New Business:

Fencing Around the Pool. Area: The matter of the fence was discussed. Board will get estimates and will present Board's preference of fencing to Architectural Committee. Final decision will not be made until fall of 2004.

Repair and painting of Entrance Sign: Stephen will check to see what repairs are needed. Board will then decide whether to repair at this time. If Board decides to repair and paint, color preferences will be presented to Architectural Committee for approval.

Landscape Committee: Stephen presented the idea of forming a landscape committee. Nancy Horne volunteered to take the responsibility of chairperson. No decision was made by the board at this time.

Next meeting is set for June 20, 2004

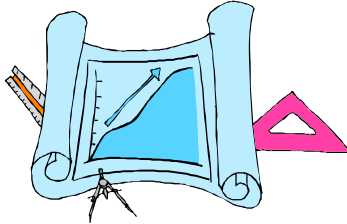


Architectural Committee Update

If you plan to add a structure including a fence, change the exterior of your home or lot, or the use of your lot, you must submit plans to the Architectural Committee (AC) for approval.

Plans must include dimensions of the project, its location on the lot and materials and colors to be used. A letter explaining your plans is needed.

See the Architectural Guide, available on the website, for more information.



Our covenants give the AC up to 60 days to review plans; however, reviews are currently taking about two weeks or less from the time the AC receives useable

plans. Decisions require a majority vote of the AC.

Please give your plans to

Hamp at 613 Ashley Trail or e-mail them to the address in the box at right.

In addition to AC approval, projects should comply with any applicable county ordi-

nances and zoning regulations and may require county permits.

Recent Actions

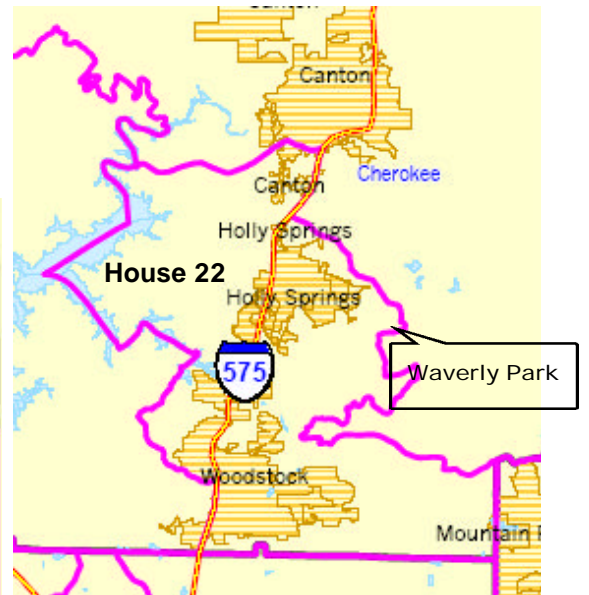
- 402 Westchester: backyard play set, approved.
- Common Area: playground and planting bed borders; approved.
- 832 Oxford: deck/porch conversion; approved.

AC Members
 Jonathan Blake
 Steve Dillon
 Rex Jones
 Larry Lindberg
 Hamp Reid
 -
 Email:
wpha-ac@mindspring.com

New General Assembly Maps

Maps from www.georgia2000.org

See the related story **Redistricting Changes Affect Waverly Park** on page 1.



How's Your 2004 Assessment?

The 2004 property tax assessments are out but some of the increases appear to be erratic.

A survey of nine 2004 WP tax appraisals shows the following percentage increases in market value from 2003:

- 3.10%
- 5.87%
- 5.97%
- 6.40%
- 6.42%
- 8.52%
- 9.11%
- 13.02%
- 21.43%

Reasons for the varying increases are not readily apparent.

Property taxes are determined by multiplying 40% of

the market value by the millage rates. Millage rates are set later in the year by the county school board and board of commissioners .

The school board is reportedly talking of a \$4.1 million budget shortfall which could mean a millage (and tax) increase.

If you would like to view neighborhood assessments, the county tax assessors data base is available at

www.cherokeega.com/ccweb/applications/assessor/tax_search.cfm

Waverly Park is on Tax Map 15N21C. Notice that tax parcel numbers are not always the same as the subdivision lot numbers.

You may file a written appeal with the tax assessors before June 24.

From *Property Tax Guide For The Georgia Taxpayer*:

“Georgia law provides a procedure for property tax appeals at the county level. Taxpayers may challenge an assessment by the county board of tax assessors by appealing to the county board of equalization or to an arbitrator or arbitrators. Appeals may be filed on issues concerning:

- **taxability** - the property is exempt from taxation,
- **uniformity of assessment** - values are the same within the same class of property,



- **value** - if the county board of tax assessors changed the appraised value of the owner's property this year, and
- **denials of homestead exemption.**”

Sunshine Committee

—By Heather Vence



With a new year starting for the homeowners association the Sunshine Committee is starting new also.

This year we would like to have a member from every street. We feel by doing this it will make it easier to keep track of all the happenings in the neighborhood.

We have members from every street except West-

chester Way. So if you live on Westchester please consider joining the committee this year.

If you have any questions feel free to contact any of the members listed.

Thank you in advance for volunteering.

Heather Vence	770-721-1118	hvence@adelphia.net
Stacey Kirkland	770-345-9742	dskirk809@aol.com
Nancy Horne	770-345-4090	nancyhorne@alltel.net

 A graphic illustration of a black graduation cap (mortarboard) with a tassel, and a rolled-up diploma tied with a ribbon. The background is light blue with a white rectangular area containing text.

Congratulations!
Waverly Park Graduates

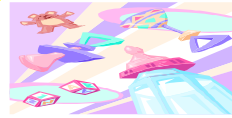
- **Megan Whitley:** Sequoyah HS with honors; National Honor Roll, Who's Who; to North Georgia College and State University.

Priceless Gifts For Free

—From Nancy Horne

- **The gift of a favor:** Everyday, go out of your way to do something kind for someone
- **The gift of a written note:** A brief, handwritten note may be remembered for a lifetime and may even change a life.
- **The gift of a smile:** A smile costs nothing, takes less energy than a frown and can brighten someone's life like a beam of sunshine and fill their heart with joy.

Allyson Chandler Age 15 **Need a Baby-sitter???**



Phone number-(770)345-3881
Address-873 Oxford Drive.
Canton GA 30115

Training-Red Cross Babysitting
Clinic, (certified red cross
babysitter) 3 years exp.



Recent Neighborhood Sales in Waverly Park

**700 Habersham Place in
Waverly Park sold recently for \$169,000 in 52
days
And
860 Oxford Drive sold for \$172,000 in 17
days**

With the summer coming
sales are picking up with rates in the 6% range. If
you're thinking about making a move call your
RESIDENT REALTOR for a
"FREE" MARKET ANALYSIS TODAY

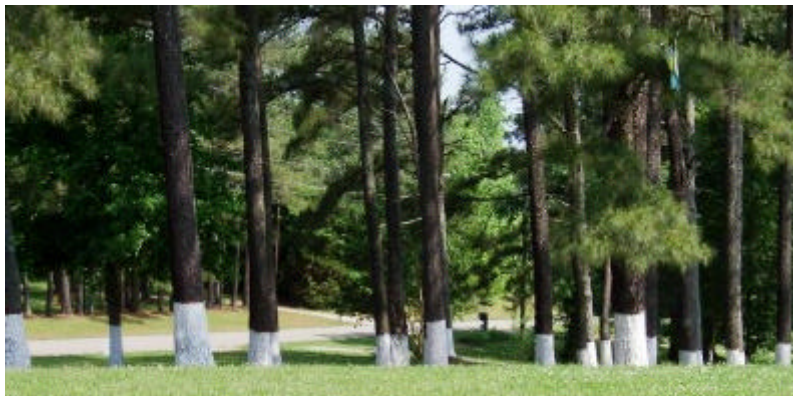
**CYNDI CHANDLER
(404)401-4730
PRUDENTIAL GEORGIA REALTY**

Pot Hole Patrol



Has anyone reported the pot hole on
Westchester Way over the creek?

[www.cherokeega.com/ccweb/applications/
publicworks/road_repairs.cfm](http://www.cherokeega.com/ccweb/applications/publicworks/road_repairs.cfm)



What were they thinking?