



A Covenant Community

Waverly Park Press

December 1, 2007

www.waverlyparke.com



Inside this issue:

Letters To WPP	3
For Sale	3
WP Directory Updates	3
Recent Home Sales ...	4
WPHA Board of Directors	2
Current and Upcoming Events	2
Sunshine Committee	4
Architectural Committee Update	3

2008 Assessment Set

The WPHA Board of Directors set next year's annual assessment for WP homeowners during their November 27 meeting. The 2008 assessment will be \$185.22 and covers WPHA's fiscal year January 1 to December 31, 2008.

Assessment invoices will be mailed to homeowners in January, 2008, and the assessment will be payable no later than February 28, 2008.

Past boards have traditionally increased assessments by the maximum 5% allowed by our covenants. This is the most reliable way to maintain our reserves for planned and unexpected expenses.

One major upcoming expense is the swimming pool resurfacing. This project is

planned for just prior to the May 2008 pool opening.



Board Resolution 7 of July 21, 2002, sets the timetable for the collection of unpaid assessments. This resolution is available on the

WP website Documents page.

Reprint: Alternative To Burning Leaves

Since outdoor burning is suspended by the drought, you can collect leaves for compost or wait for them to blow onto your neighbor's yard. Here's another option from the 12/1/05 WPP.

—By Rosie Lerner, Consumer Horticulture Specialist,,Purdue University

"Tree leaves can be recycled directly on the lawn.

Use your power mower or shredder/vacuum to break dry leaves up into smaller pieces. A mulching blade on the mower will speed this process, but even a standard blade will do an adequate job. For large leaves like maple and sycamore, it may take several passes to get a finely shredded product. Once the leaves are pulverized, they will break down quickly.

A fall application of nitrogen fertilizer (about 1 pound of nitrogen per 1,000 square feet) will help speed decomposition of the leaves and also will benefit the grass plants."



About *Waverly Park Press*...

- Published on the first of each month by the Waverly Park Homeowners Assoc., Inc. (WPHA), P. O. Box 26, Lebanon, GA 30146, as a service to its members and the residents of Waverly Park.
- Available at www.waverlyparke.com and delivered to Waverly Park homes without Internet access.
- Articles and information of interest to Waverly Park residents are welcome. Anonymous articles are not accepted. E-mail input is preferred. Please include your name, address and phone number. Deadline is the 28th of the month.
- Opinions expressed are those of the writers and may not reflect the opinion of WPHA or its directors and officers.
- Editor: Hamp Reid 770-720-4384 E-mail: wppress@alltel.net

WPHA Board of Directors

President	Jeff Peace	404-405-5271	jpeace@RRCG.org
Vice President	Greg Vence	770-721-1118	Gvence@comcast.net
Secretary	Carol Knapp	770-345-0823	Caknapp@comcast.net
Treasurer	Hamp Reid	770-720-4384	wpha_cfo@alltel.net
Committees	Steve Dillon	770-720-3990	sjd442@yahoo.com

**Current and Upcoming Events**

Time/Date	Event	Location	Contact
September 28 Watering Restrictions Changes Effective	Mandatory Outdoor Watering Restrictions: No residential outdoor watering allowed.	Statewide. Personal food gardens are exempt from restrictions.	GA Environmental Protection Division & Cherokee County Water Authority
October 1 – ??	Outdoor Burning Season Suspended Due To Drought – Required Daily Permits Not Issued	45 counties in and around metro Atlanta	GA Forestry Commission 1-877-OK2-BURN or www.gfc.state.ga.us/OnlinePermits/
December 20, 2007	2007 Property Taxes Due	2780 Marietta Hwy, Canton	Cherokee County Tax Commissioner
December 24, 2007 – January 7, 2008	School System Winter Holidays		Cherokee County Schools
January 7, 2008	Last Day to Register to Vote in Presidential Preference Primary	400 E. Main St., Canton	Cherokee County Voter Registration, 770-479-0407
February 5, 2008	Presidential Preference Primary	Precinct 42 @ Holly Springs Elementary School	Cherokee County Voter Registration, 770-479-0407
February 28, 2008	2008 WPHA Assessments Due	Invoices Sent January 2008	WPHA Treasurer
March 1, 2008	Homestead Exemptions Application Deadline for New Homeowners	2782 Marietta Hwy, Canton	Cherokee County Tax Assessor, 678-493-6120
April 2008	Annual WPHA Members Meeting	Notices Mailed in March 2008	

Letters To WPP

Homeowners' Dogs

Homeowners are still not cleaning up after their dogs, whether the dog is being walked or roaming free. As you can imagine, it is not pleasant cleaning up after a dog that belongs to someone else, especially a large dog. Frankly, I am tired of cleaning up after a dog that belongs to someone else.

I do not understand, why some homeowners think they do not have to follow rules.

If they do not want to clean up after their dog or dogs, then the homeowner should keep their dog in their yard to do their business.

Thank you,

Sherian Cashdollar
808 Oxford Drive

For Sale

White refrigerator with Ice maker
\$75.00.

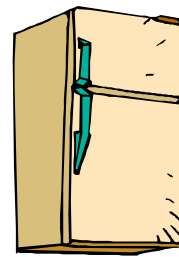
This was the refrigerator in the kitchen when I purchased the home.

It works great!

Great for kitchen or to use as an extra in the garage or basement.

Contact

Robin Porter at 770-720-9820
386 Westchester Way

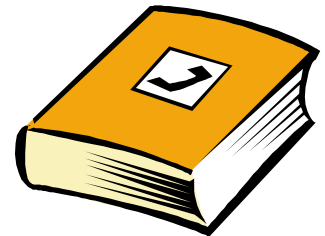


WP Directory Updates

Delete
Tangen

Please make these changes to your directory dated June 1, 2007:

Add
Kreeger, John
Thornton, Maxine
864 Oxford Drive
770-720-7926

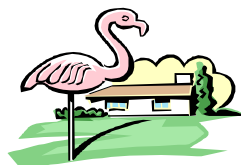


Architectural Committee Update

If you plan to add a structure including a fence, change the exterior of your home or lot, or the use of your lot, you must submit plans to the Architectural Committee (AC) for approval.

See the **Architectural Guide**, available on the WP website documents page, for more details.

Please give your plans to Hamp at 613 Ashley Trail or email them to the address in the box.



AC Members

Charles Cash
Steve Dillon
David Kirkland
Carol Knapp
Jeff Peace
Hamp Reid

Email:
wpha_ac@alltel.net

Sunshine Committee

Sunshine, something we all like to see and feel. It brightens our day and warms our spirits. Just as natural sunshine does this in our lives, your Sunshine Committee wants to function in the same way.

We have a group of ladies this year and we're ready to spread a little sunshine through out our neighborhood.

We want to welcome the new neighbors and new babies, give out congratulations on exciting events and help out in time of sorrow, surgery or illness.

We need your help though as we might not know what is going on with your neighbors or with you.

As you know of situations that we can touch as a friendly neighborhood committee please let us know.

Thank you for helping us spread sunshine in Waverly Park.



Tiffany Rowson, Chair	770-720-9595
Jean Harrell	770-479-0077
Faith Hoover	770-479-6378
Nancy Horne	770-345-4090
Joni Kanazawa	678-493-2480
Margaret Reid	770-720-4384

Recent Home Sales in Waverly Park 864 Oxford Drive

Split Foyer style home with 4BD & 3BA sold on 11/2 for **\$213, 000** with \$165 paid for buyer's closing cost.

I'm working with a new buyer that's interested in Waverly Park so call me and save THOUSANDS without listing your home if you're thinking of making a move!

Search all North Georgia Homes for sale at
www.yourgeorgiahome.com

Remember me your
Resident Realtor
Cyndi Hendrix
Telfair Brokers
404-401-4730